

## UAW CARS

Cadillac CT4  
Cadillac CT4-V  
Cadillac CT4-V Blackwing  
Cadillac CT5  
Cadillac CT5-V  
Cadillac CT5-V Blackwing  
Chevrolet Bolt (Electric)  
Chevrolet Bolt EUV (Electric)  
Chevrolet Camaro  
Chevrolet Corvette  
Chevrolet Malibu  
Ford Mustang Coupe  
Ford Mustang Convertible  
Ford Mustang Shelby

## UAW TRUCKS

Chevrolet Colorado  
Chevrolet Medium-Duty Silverado  
Navistar (Regular and Crew Cab)  
Chevrolet Silverado Light Duty  
(Crew\*\* and Double Cab only)  
Chevrolet Silverado Heavy Duty  
Ford F-150  
Ford F-150 (Hybrid)  
Ford F-150 (Electric)  
Ford F-650/750  
Ford Ranger  
Ford Super Duty 250/350/450/550  
GMC Canyon  
GMC Sierra Light Duty  
(Crew\*\* and Double Cab only)  
GMC Sierra Heavy Duty  
GMC Hummer Pick-up (Electric)

Jeep Gladiator  
Ram 1500  
Ram 1500 Classic

## UAW SUVs/CUVS

Buick Enclave  
Cadillac Escalade  
Cadillac Escalade ESV  
Cadillac Escalade (Hybrid)  
Cadillac Lyric (Electric)  
Cadillac XT4  
Cadillac XT5  
Cadillac XT6  
Chevrolet Suburban  
Chevrolet Tahoe  
Chevrolet Tahoe (Police)  
Chevrolet Tahoe (Special Service)  
Chevrolet Traverse  
Dodge Durango  
Ford Bronco  
Ford Escape  
Ford Escape (Hybrid)  
Ford Expedition  
Ford Explorer  
Ford Explorer (Hybrid)  
Ford Explorer (Police Interceptor)  
GMC Acadia  
GMC Hummer SUV (Electric)  
GMC Yukon  
GMC Yukon (Hybrid)  
GMC Yukon XL  
Jeep Cherokee  
Jeep Grand Cherokee  
Jeep Grand Cherokee (Hybrid)  
Grand Wagoneer  
Wagoneer

Jeep Wrangler  
Jeep Wrangler (Hybrid)  
Lincoln Aviator  
Lincoln Aviator (Hybrid)  
Lincoln Corsair  
Lincoln Corsair (Hybrid)  
Lincoln Navigator

## UAW VANS

Chevrolet Express  
Chevrolet Express (Cut-Away)  
Ford Transit  
Ford Transit (Electric)  
Ford E-Series (Cut-Away)  
GMC Savana  
GMC Savana (Cut-Away)

## UNIFOR CARS

Dodge Challenger  
Dodge Charger  
Chrysler 300

## UNIFOR SUVs/CUVS

Ford Edge  
Lincoln Nautilus

## UNIFOR TRUCKS

Chevrolet Silverado Light Duty  
(crew\*\* and double cab only)  
Chevrolet Silverado Heavy Duty

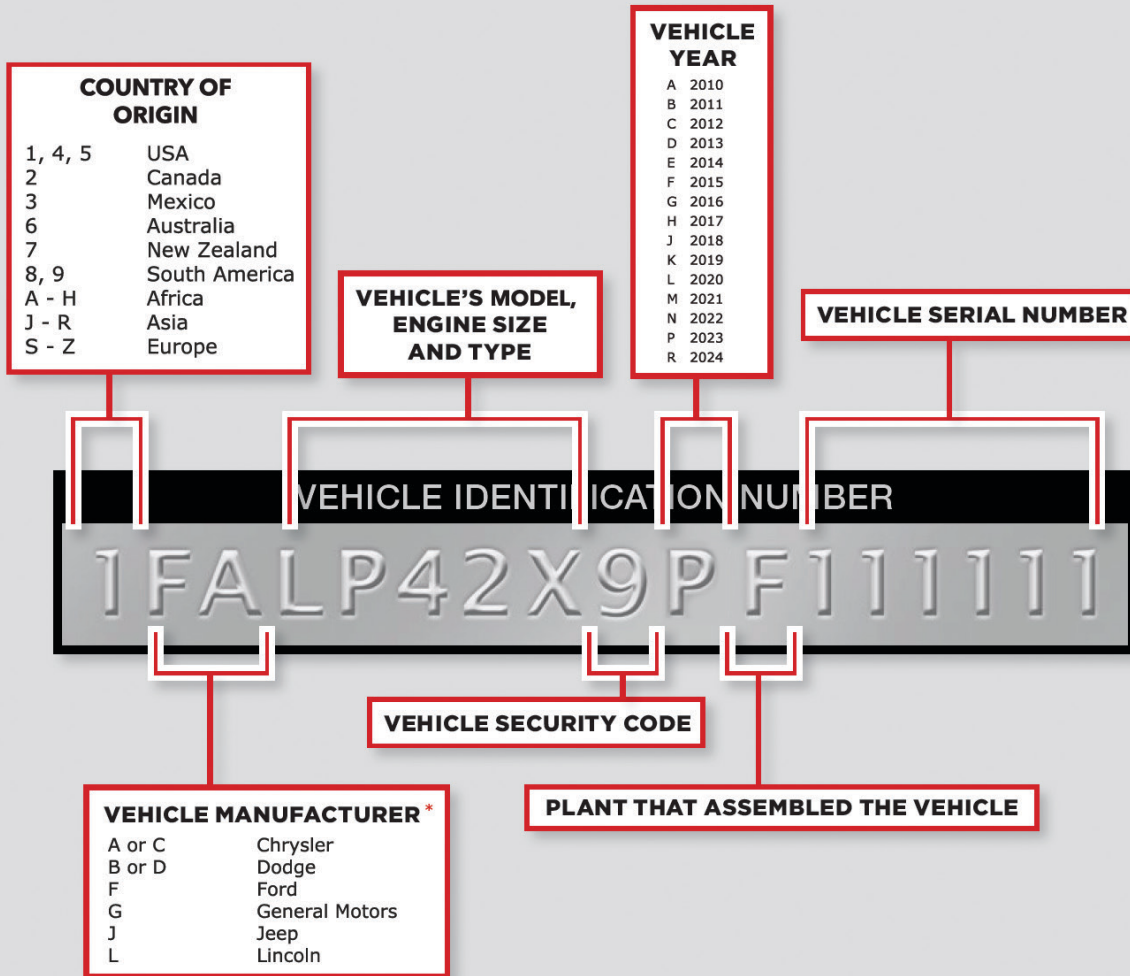
## UNIFOR VANS

Chrysler Pacifica  
Chrysler Pacifica (Hybrid)  
Chrysler Voyager  
GM ZEV0 Electric Van for Brightdrop

These vehicles are made in the United States or Canada by members of the UAW and Canada's Unifor union, formerly the Canadian Auto Workers (CAW). Because of the integration of vehicle production in both countries, all of the vehicles listed as made in Canada include significant UAW-made content and support the jobs of UAW members. However, vehicles marked with a single asterisk (\*) are also produced in Mexico. Heavy-duty Chevrolet Silverados and GMC Sierras are built in Flint, Michigan and Heavy Duty Silverados are built in Canada. Light-duty Chevrolet Silverado and GMC Sierra Regular Cabs are produced in Mexico only. Vehicles marked with a double asterisk (\*\*) are the crew cab versions of the Chevrolet Silverado light-duty and GMC Sierra light-duty trucks. Those are assembled by UAW members in Fort Wayne, Indiana, and also in Mexico. Canada produces the light Duty Silverado Crew Cab but not the GMC version. When purchasing a vehicle marked with a single or double asterisk, it's important to check the Vehicle Identification Number (VIN). A VIN beginning with "1" or "4" or "5" identifies a U.S.-made vehicle; a "2" identifies a Canadian-made vehicle; a "3" identifies a vehicle made in Mexico. Not all vehicles made in the United States or Canada are built by union-represented workers. Vehicles not listed here, even if produced in the United States or Canada, are not union made.



# What's in a VIN?



\* The 2nd character denotes vehicle manufacturer. The 3rd character varies by manufacturer and can represent vehicle type or division.



- [facebook.com/uaw.union](https://facebook.com/uaw.union)
- [twitter.com/uaw](https://twitter.com/uaw)
- [instagram.com/uaw.union](https://instagram.com/uaw.union)
- [youtube.com/user/uaw](https://youtube.com/user/uaw)

International Union, UAW  
8000 E. Jefferson Ave.  
Detroit, MI 48214

(313) 926-5000

UAW.org



## 2023 UAW Union-Built Vehicle Guide

